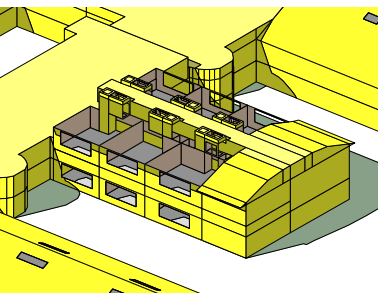


<Virtual Environment>

IES <VE> TRAINING

Learn The Most Talked About Building Performance Analysis Tool!

IES is now offering training for its modules designed for use in certification programs such as LEED India. Basic and advanced course are now available in India!



The IES Suite provides architects and building professionals the ability to customise analysis to fit their needs across; energy consumption, carbon emissions, LEED Daylighting, thermal comfort, solar shading and penetration, glare, luminance and illumance (radiance), artificial lighting, internal loads, envelope manipulation and others.



It also helps engineers address detailed HVAC design and analysis by considering factors like hybrid ventilation, diffuser placement, external airflow and advanced system design.



- > **Consider building performance results** alongside aesthetics to inform decisions
- > **Get high quality data from the** earliest stages of design
- > **Make best use of innovative passive** design strategies
- > **Make best use of zero/low carbon** technologies
- > **Achieve dramatic energy reductions** while ensuring good daylight levels and thermal comfort
- > **Assess and compare potential** performance trade-offs of different sustainable strategies
- > **Check latest technology developments**
New systems like VAV's & VRF's

All the tools are integrated around a central 3D model that can connect directly with Google SketchUp™, Autodesk Revit and via gbXML with other 3D design tools – so you can easily and quickly fit performance analysis into your design workflow without rebuilding geometry.

IES can help you achieve your green design goals in a cost and time effective way that allows you to differentiate yourself from the competition. You'll find that incorporating performance analysis into your design workflow stimulates collaborative thinking, multidisciplinary decision making, creativity and innovation.

IES is the only recognized software with the IGBC in India and is a de facto analysis tool for LEED the world over.

What are you waiting for? Select a batch and join the revolution!

Only Rs.
10,000/- Per
Course

<Virtual Environment>

IES <VE> TRAINING

Learn The Most Talked About Building Performance Analysis Tool!

Course: IES Modules	Brief Course Content
Basic Course: Sustainability Toolkit ModelIT FlucsPro ApacheSim SunCast	<ul style="list-style-type: none"> ➤ 3D building modeling in IES ➤ Working with Sustainability toolkit product ➤ Basics of building physics, HVAC, pumps & fans ➤ Annual/Monthly energy and carbon simulation ➤ General daylighting and LEED Credit 8.1 reportage with visualisation ➤ Thermal comfort assessment ➤ ASHRAE loads calculations (How to calculate a base case for LEED India?) ➤ Solar shading calculations and animations
Advanced Course*: LightPro RadianceIES MacroFlo MicroFlo ApacheHVAC	<ul style="list-style-type: none"> ➤ Lighting fundamentals ➤ Photo-realistic 3D rendering using ray-tracing ➤ Detailed assessment of light pipes, light wells, light shelves, semi-transparent glazing ➤ Glare analysis for occupant visual comfort ➤ Artificial lighting analysis ➤ Natural ventilation studies ➤ Advanced HVAC studies ➤ Advanced thermal studies in ApacheSim linking other modules of the <VE> ➤ Room CFD studies ➤ External CFD studies

* For admission to advanced course one needs to have completed basic course

Faculty

LEED, ASHRAE & Energy Theory Trainer

Shirish Deshpande (Director, Ab Initio, Mumbai)

Shirish is a practicing LEED consultant with more than 15 years of diverse experience in the areas of Project Management, Water and Waste-water technologies, Energy Auditing and Green Buildings. He is a Chemical engineer by profession and is a Certified Energy Auditor by BEE and a LEED-AP from GBCI, USA. He is also a visiting faculty at Rachana Sansad's Institute for Environmental Architecture, Mumbai for Energy Efficient Building Design and for Green Buildings. He has undergone Energy Modeling training from some of the best national and international experts and has good hands-on experience on several Energy Modeling softwares.

IES <VE> Certified Software Trainer

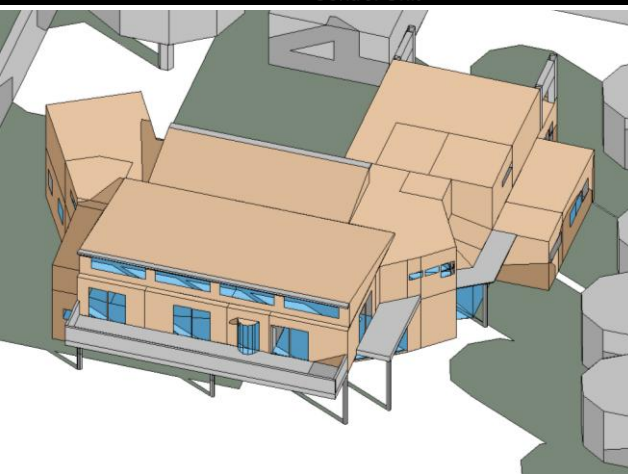
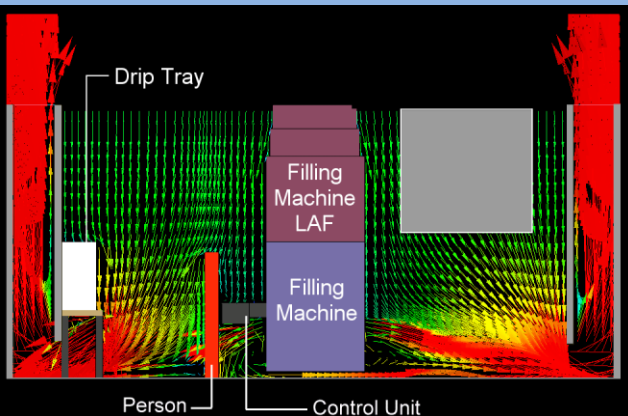
Rohan Rawte (VP, SimCosm India, Pune)

Rohan is a practicing mechanical engineer with more than a decade of experience in the software industry. He has special expertise with analysis software and has actively worked on several simulation projects in his career. He has been associated with IES <VE> software since late 2007 and has more than 1,500 hours of work experience on the software and related technology. He is an ASME member.

<Virtual Environment>

IES <VE> TRAINING

Learn The Most Talked About Building Performance Analysis Tool!



Who should take this course?

- Architects
- MEP Consultants
- Energy analysts or auditors
- LEED APs
- Faculty members who teach Architecture/Sustainable design/Energy conservation
- Students of Architecture
- Students of Sustainability
- Students of Energy Analysis
- IGBC members
- Architects/Engineers working on LEED India projects

Why should you take this course?

- World class technology:** IES represents a world leading technology in building simulation. Learn what the world uses for an accurate, comprehensive and cost effective solution to sustainable solutions. IES is the ONLY software recognized by the IGBC for India.
- World class faculty:** With Shirish & Rohan to guide, you have more than 25 years of experience with design, software and sustainability at your disposal. We also link up with more than 25 skilled professionals from IES worldwide to address your queries.
- FREE software trial:** On completion of the course, ALL participants will be given a 30 day FREE trial of the FULL suite of software. Put your learning to practice!
- Post training guidance:** Once you take a course with us, you can count on us for extended guidance and support for using your trial as well as addressing simulations in the real world.

Please note that accommodation will NOT be provided by SimCosm India. Everyday breakfast and lunch will be provided by us.